

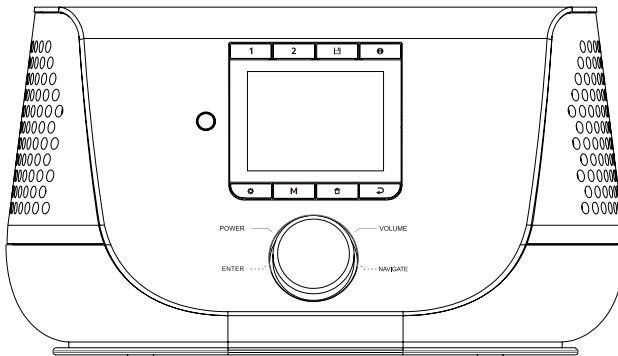
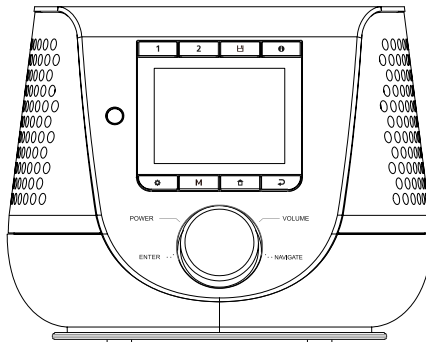
00054227  
00054229  
(DIR3200SBT)  
00054228  
00054230  
(DIR3300SBT)

***hama***®  
THE SMART SOLUTION



## Digital Radio

## Digital-Radio



Operating Instructions / Bedienungsanleitung / Mode d'emploi / Instrucciones de uso /  
Руководство по эксплуатации / Istruzioni per l'uso / Gebruiksaanwijzing / Οδηγίες χρήσης / Instrukcja obsługi /  
Használati útmutató / Návod k použití / Návod na použitie / Manual de instruções / Kullanna käsiraamatu /  
Manual de utilizare / Bruksanvisning / Käyttöohje / Работна инструкция / Betjeningsvejledning / Manuelt stasjonssøk

## 00054227/00054229 (DIR3200SBT)

Technical data							
Radio receiver	FM ✓	DAB ✓	DAB+ ✓	Bluetooth ✓	Podcasts ✓	Internet ✓	Spotify ✓
Bluetooth	WiFi 2.4 GHz (b/g/n) / 5 GHz (a/n), USB (Charge 5 V $\equiv$ 2 A)						
Display	2.8" (7.11 cm) Colour TFT						
Encryption	WEP, WPA, WPA2, WPS						
DAB frequencies	174.928 – 239.200 MHz						
FM frequencies	87.5 – 108 MHz						
Current input	12.0 V DC / 2.0 A / 24.0 W						
Connections	Line OUT, AUX IN, 3.5 mm Earphone Jack, USB (Charge)						
Favourites	DAB/DAB+: 20	FM: 20	Internet: 20	Podcasts: 20	Spotify Connect: 10		
Codec	IR: MP3, WMA, ADTS					DAB: MP2, AAC	
UI languages	English, German, Danish, Dutch, Finnish, French, Italian, Norwegian, Polish, Portuguese, Spanish, Swedish, Turkish						
Packaging contents	DIR3200SBT, Remote Control, Batteries, Short Manual						

## 00054228/00054230 (DIR3300SBT)

Technical data							
<b>Radio receiver</b>	FM ✓	DAB ✓	DAB+ ✓	Bluetooth ✓	Podcasts ✓	Internet ✓	Spotify ✓
<b>Bluetooth</b>	WiFi 2.4 GHz (b/g/n) / 5 GHz (a/n), USB (Charge 5 V $\equiv$ 2 A)						
<b>Display</b>	2.8" (7.11 cm) Colour TFT						
<b>Encryption</b>	WEP, WPA, WPA2, WPS						
<b>DAB frequencies</b>	174.928 – 239.200 MHz						
<b>FM frequencies</b>	87.5 – 108 MHz						
<b>Loudspeaker</b>	2.75" Coaxial Speaker						
<b>Current input</b>	12.0 V DC / 2.0 A / 24.0 W						
<b>Connections</b>	Line OUT, AUX IN, 3.5 mm Earphone Jack, USB (Charge)						
<b>Favourites</b>	DAB / DAB+: 20	FM: 20	Internet: 20	Podcasts: 20	Spotify Connect: 10		
<b>Codec</b>	IR: MP3, WMA, ADTS					DAB: MP2, AAC	
<b>UI languages</b>	English, German, Danish, Dutch, Finnish, French, Italian, Norwegian, Polish, Portuguese, Spanish, Swedish, Turkish						
<b>Packaging contents</b>	DIR3300SBT, Remote Control, Batteries, Short Manual, Telescope Antenna						

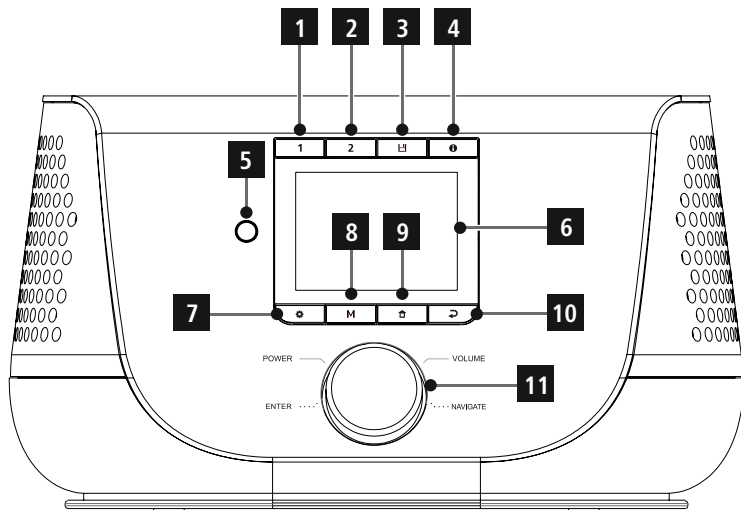
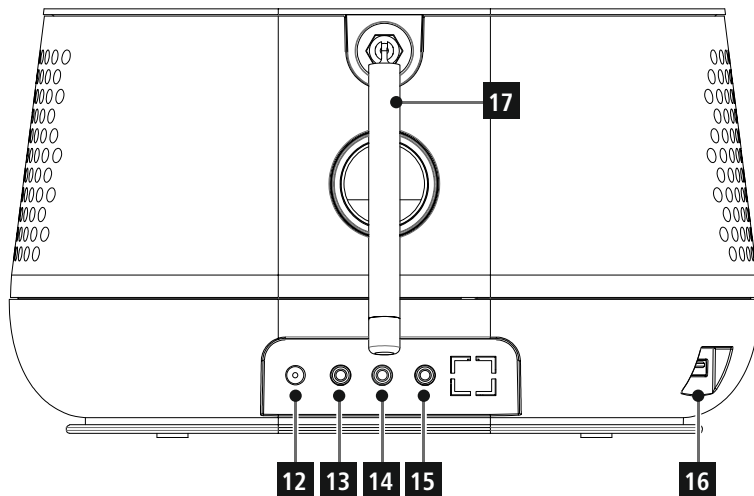


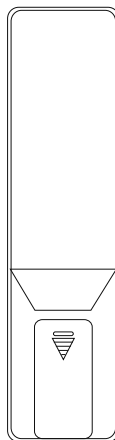
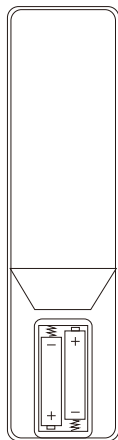
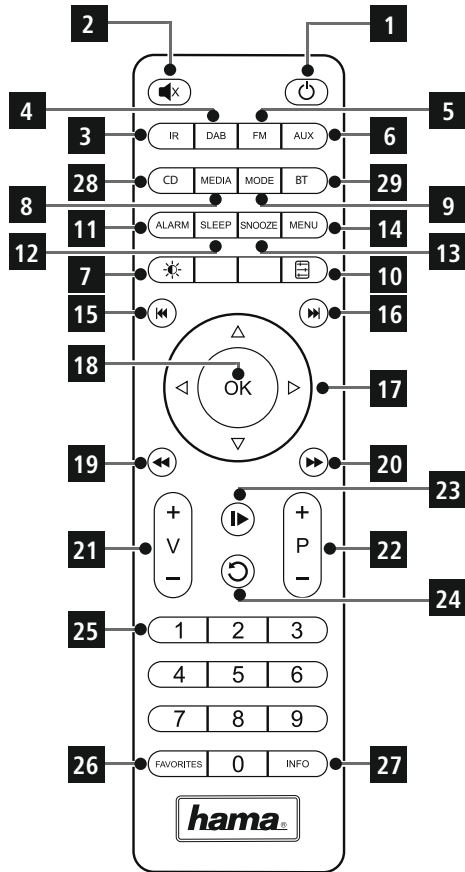
# Spotify Connect

---

Use your phone, tablet or computer as a remote control for Spotify.  
Go to [spotify.com/connect](https://spotify.com/connect) to learn how








**A****B**



**hama**

**Controls and displays**

<b>A: Front</b>	
1	<b>[PRESET 1] button</b>
	Memory slot 1
2	<b>[PRESET 2] button</b>
	Memory slot 2
3	 <b>[PRESET] button</b>
	Save/access favourites
4	 <b>[INFO] button</b>
	Display additional information
5	<b>Infra-red receiver</b>
6	<b>Display</b>
7	 <b>[MENU/SETTINGS] button</b>
	Direct access to settings/menu
8	<b>[MODE] button</b>
	Change operating mode (Internet radio, podcasts, Spotify Connect, DAB+, FM, Bluetooth, AUX In)
9	 <b>[HOME] button</b>
	Back to the main menu
10	 <b>[BACK] button</b>
	Back one menu level
11	<b>[POWER/VOLUME/ENTER/NAVIGATE]</b>
	On/Off switch; Volume control; Selection confirmation; Navigation

<b>B: Rear</b>	
12	Mains power supply
13	Aux In
14	Headphone jack
15	Line Out
16	USB interface
17	Antenna*

**Note**


\* "DIR3300SBT" has a changeable antenna. You can use an active or passive antenna equipped with a coaxial connection.

\*\* The rotary knob has a dual function. Turning the controller allows you to change the volume or navigate through the menu structure. Pressing this rotary knob puts the device in standby mode or confirms a selection.



C: Remote control		
1	[ ⏻ ]	On/off switch Press $\Delta$ [volume -/+]/ [ ⏻ ]
2	[ 🔊 X ]	Mute
3	[ IR ]	Direct access to Internet radio mode $\Delta$ [mode]
4	[ DAB ]	Direct access to DAB mode $\Delta$ [mode]
5	[ FM ]	Direct access to FM mode $\Delta$ [mode]
6	[ AUX ]	Direct access to operating mode Aux In $\Delta$ [mode]
7	[ 🌙 ]	Backlight settings
8	[ MEDIA ]	Direct access to operating mode MEDIA $\Delta$ [mode]**
9	[ MODE ]	Change operating mode (Internet radio, DAB, FM, Spotify Connect, podcasts, Aux in) $\Delta$ [mode]
10	[ 🎛️ ]	Equaliser settings
11	[ ALARM ]	Direct access to alarm clock settings $\Delta$ [alarm]
12	[ SLEEP ]	Snooze settings
13	[ SNOOZE ]	Activating Snooze
14	[ MENU ]	Direct access to the menu $\Delta$ [menu]
15	[ ⏮ ]	Previous track (mode: Spotify Connect, podcasts, BT)
16	[ ⏭ ]	Next track (mode: Spotify Connect, podcasts, BT)
17	Navigation buttons	▲ Up / ▼ Down / ◀ Back one menu level $\Delta$ [back] / ▶ Forward/Confirm $\Delta$ Press [enter/navigate]/[OK]
18	[ OK ]	Confirm $\Delta$ Press [enter/navigate]

19	[ ⏪ ]	Rewind (mode: Spotify Connect, podcasts)
20	[ ⏩ ]	Fast forward (mode: Spotify Connect, podcasts)
21	Volume buttons [+]/[-]	Volume control $\Delta$ Turn [volume -/+]/ [ ⏻ ]
22	Favourites buttons [+]/[-]	Selection from favourites list
23	[ ⏸ ]	Start/Stop playback (mode: Spotify Connect, podcasts, BT, Aux in)
24	[ ↶ ]	Back one menu level $\Delta$ [back]
25	Number buttons	Direct access to/save favourites
26	[ FAVORITES ]	List/save favourites
27	[ INFO ]	Display additional information $\Delta$ [info]
28		CD playback mode**
29		BT playback mode

#### Note

- Buttons marked with \*\* have no function on this radio model.
- Please note that not every function may be available for the product you have purchased since the range of functions is always determined by the features on your product.





## Content

<b>1. Explanation of warning symbols and notes . . .</b>	<b>6</b>
<b>2. Package contents . . . . .</b>	<b>6</b>
<b>3. Safety instructions . . . . .</b>	<b>6</b>
<b>4. Informations and notes before getting started .</b>	<b>7</b>
<b>5. Getting started . . . . .</b>	<b>7</b>
5.1 General notes on use . . . . .	8
5.1.1 Switch On/Off/Standby . . . . .	8
5.1.2 Navigation and controls . . . . .	8
5.1.3 Volume adjustment/mute . . . . .	8
5.2 Connecting and starting up . . . . .	8
5.3 General notes on use . . . . .	8
5.4 Initial setup . . . . .	9
<b>6. Main menu/modes . . . . .</b>	<b>10</b>
<b>7. Internet radio . . . . .</b>	<b>10</b>
7.1 Station search . . . . .	10
7.1.1 Search by country or region . . . . .	11
7.1.2 Search by genre . . . . .	11
7.1.3 Search by name . . . . .	11
7.1.4 Popular stations . . . . .	11
7.1.5 Local stations . . . . .	11
7.2 Favourites (local) . . . . .	12
7.2.1 Assigning the favourites shortcut buttons . . . . .	12
7.2.2 Calling up shortcut button favourites . . . . .	12
7.2.3 Assigning the list of favourites (3-20) . . . . .	12
7.2.4 Calling up a station from the Favourites list (3-20). . . . .	12
<b>8. Podcasts . . . . .</b>	<b>12</b>
8.1 Podcast search . . . . .	12
8.1.1 Search by country or region . . . . .	12
8.1.2 Search by format (subjects or categories) . . . . .	12
8.1.3 Search by name . . . . .	13
8.2 Favourites (local) . . . . .	13
8.2.1 Assigning the favourites shortcut buttons . . . . .	13
8.2.2 Calling up shortcut button favourites . . . . .	13
8.2.3 Assigning the list of favourites (3-20) . . . . .	13
8.2.4 Calling up a station from the Favourites list (3-20). . . . .	13
<b>9. Spotify . . . . .</b>	<b>13</b>
<b>10. Digital radio (DAB/DAB+) . . . . .</b>	<b>14</b>
10.1 Search/Automatic search . . . . .	14
10.2 Station list . . . . .	14
10.3 Edit station list . . . . .	14
10.4 Favourites (local) . . . . .	15
10.4.1 Assigning the favourites shortcut buttons . . . . .	15
10.4.2 Calling up shortcut button favourites . . . . .	15
10.4.3 Assigning the list of favourites (3-20) . . . . .	15
10.4.4 Calling up a station from the Favourites list (3-20). . . . .	15
10.5 DRC (Dynamic Range Control) . . . . .	15
10.6 Station sequence . . . . .	15
<b>11. FM . . . . .</b>	<b>16</b>
11.1 Search setting . . . . .	16
11.2 Search/Automatic search . . . . .	16
11.3 Manual station search . . . . .	16
11.4 Favourites (local) . . . . .	16
11.4.1 Assigning the favourites shortcut buttons . . . . .	16
11.4.2 Calling up shortcut button favourites . . . . .	16
11.4.3 Assigning the list of favourites (3-20) . . . . .	16
11.4.4 Calling up a station from the Favourites list (3-20) . . . . .	17
11.5 Audio setting . . . . .	17
<b>12. Bluetooth® . . . . .</b>	<b>17</b>
12.1 Bluetooth® pairing . . . . .	17
12.2 Automatic Bluetooth® connection (once pairing has been performed) . . . . .	18
12.3 Terminating the Bluetooth® connection. . . . .	18
<b>13. Sleep . . . . .</b>	<b>18</b>
<b>14. Alarm . . . . .</b>	<b>18</b>
14.1 Alarm settings . . . . .	18
14.2 Activating/deactivating the alarm . . . . .	19
14.3 Stopping the alarm / Snooze function . . . . .	19
<b>15. Other connection options . . . . .</b>	<b>19</b>
15.1 Auxiliary Input . . . . .	19
15.2 Connection via LINE OUT . . . . .	19
15.3 Connection via headphone jack . . . . .	20
15.4 Connection via USB interface . . . . .	20
<b>16. System settings . . . . .</b>	<b>20</b>
16.1 Equaliser . . . . .	20
16.2 Internet settings . . . . .	21
16.2.1 Network wizard – Configuration of Internet connection / Search . . . . .	21
16.2.2 Wireless network connection (WLAN) . . . . .	21
16.2.3 Manual configuration of network connection – wireless (WLAN) . . . . .	22
16.2.4 View settings . . . . .	22
16.2.5 Network profile . . . . .	22
16.3 Language . . . . .	23



---

16.4	Factory reset . . . . .	23
16.5	Software update . . . . .	24
16.6	Info . . . . .	24
16.7	Setup wizard . . . . .	24
16.8	Backlight . . . . .	24
16.9	Auto standby . . . . .	25
<b>17.</b>	<b>UNDOK – Everything in the palm of your hand . . . . .</b>	<b>25</b>
17.1	First-time setup of the device with UNDOK . . . . .	25
17.1.1	Procedure for iOS users . . . . .	25
17.1.2	Procedure for Android users . . . . .	26
<b>18.</b>	<b>Care and Maintenance . . . . .</b>	<b>26</b>
<b>19.</b>	<b>Warranty Disclaimer . . . . .</b>	<b>26</b>
<b>20.</b>	<b>Recycling Information . . . . .</b>	<b>26</b>
<b>21.</b>	<b>Declaration of Conformity . . . . .</b>	<b>27</b>



## Menu structure

### Main menu\*

Internet Radio	Station List	Germany	
		History	
		Search	
		Location	
		Popular	
		Discover	
		System settings**	
		Main menu*	
		Podcasts	
		Podcast List	Germany
Search			
Popular			
Location			
Discover			
System settings**			
Main menu*			
Spotify Connect			
System settings**			
Main menu*			
DAB			
Station List	Scan		
	Prune invalid		
	DRC		
	Station order		
	System settings**		
	Main menu*		
	FM		
	Scan setting		
	Audio setting		
	System settings**		
Main menu*			
Bluetooth			
Setup Bluetooth			
View Details			
System settings**			
Main menu*			
Sleep			
Alarms			
Alarm 1			
Alarm 2			
System settings**			

### System settings\*\*

Equaliser
Network
Time/Date
Language
Factory Reset
Software update
Setup wizard
Info
Privacy policy
Backlight
Color theme
Auto-Standby



Thank you for choosing a Hama product. Take your time and read the following instructions and information completely. Please keep these instructions in a safe place for future reference. If you sell the device, please pass these operating instructions on to the new owner.

## 1. Explanation of warning symbols and notes

### Risk of electric shock

This symbol indicates a risk of electric shock from touching product parts carrying hazardous voltage.

### Warning

This symbol is used to indicate safety instructions or to draw your attention to specific hazards and risks.

### Note

This symbol is used to indicate additional information or important notes.

## 2. Package contents

- "DIR3200SBT/DIR3300SBT" digital/Internet radio
- Telescopic antenna
- Power supply unit
- Remote control
- 2 x AAA batteries
- These operating instructions

## 3. Safety instructions

- The product is intended for private, non-commercial use only.
- Do not use the product in the immediate vicinity of heaters, other heat sources or in direct sunlight.
- Only use the article under moderate climatic conditions.
- Use the product only for the intended purpose.
- Do not use the product in a damp environment and avoid splashing water.
- Be considerate. High volumes can disturb or interfere with your surroundings.
- Protect the product from dirt, moisture and overheating and use it in dry rooms only.
- Do not place any objects on the device and never use it as a resting surface.
- As with all electrical products, this device should be kept out of the reach of children.
- Children must not play with the device. Cleaning and user maintenance must not be carried out by children without supervision.
- Do not use the product in areas in which electronic products are not permitted.
- Do not drop the product and do not expose it to any major shocks.
- Do not operate the product outside the power limits specified in the technical data.
- Keep the packaging material out of the reach of children due to the risk of suffocation.
- Dispose of packaging material immediately in accordance with the locally applicable regulations.
- Do not modify the device in any way. Doing so voids the warranty.

### Risk of electric shock

- Do not open the device or continue to operate it if it becomes damaged.
- Do not use the product if the AC adapter, the adapter cable or the mains cable are damaged.
- Do not attempt to service or repair the product yourself. Leave any and all service work to qualified experts.



## Warning – Batteries



- When inserting batteries, note the correct polarity (+ and - markings) and insert the batteries accordingly. Failure to do so could result in the batteries leaking or exploding.
- Only use batteries (or rechargeable batteries) that match the specified type.
- Before you insert the batteries, clean the battery contacts and the polar contacts.
- Do not allow children to change batteries without supervision.
- Do not mix old and new batteries, or batteries of different types or from different manufacturers.
- Remove the batteries from products that are not being used for an extended period (unless these are being kept ready for an emergency).
- Do not short-circuit batteries.
- Do not charge batteries.
- Do not burn batteries.
- Keep batteries out of the reach of children.
- Never open, damage or swallow batteries or allow them to enter the environment. They can contain toxic, environmentally harmful heavy metals.
- Remove spent batteries from the product and dispose of them without delay.
- Avoid storing, charging or using the device in extreme temperatures and extremely low atmospheric pressure (for example, at high altitudes).

## 4. Informations and notes before getting started

### Note



A detailed description of the UNDOK app and all of its functions can be found in our UNDOK guide at:



[www.hama.com](http://www.hama.com) -> 00054227, 00054228,  
00054229, 00054230 -> Downloads

### Note



- For best reception, ensure that the antenna is fully extended and vertical.
- Try various different positions if necessary to get the best reception.

### Note



- Optional, switchable light sources or brightness sensors result in higher power consumption in the switched-on state.

### Preparing the remote control for use

Open the cover on the battery compartment. This can be found on the back of the remote control and can be opened by sliding in the direction indicated.

The extent of delivery includes two AAA batteries which must be inserted into the battery compartment for the remote control to work. When inserting the batteries, ensure that they are inserted with the correct polarity. The relevant polarity (+ / -) is marked inside the battery compartment.

### Network connection / Preparing the Internet connection

You can integrate this radio into a network. To receive Internet radio, an Internet connection is required on this the network.

### WLAN connection (wireless network)

- Ensure the router is switched on, is functioning correctly and that there is a connection to the internet/network.
- Activate the WLAN function of your router if it is not already activated.
- Follow your router's operating instructions as regards the correct functioning of the WLAN connection.

### Note



Use only original accessories (or accessories approved by Hama) to avoid damage to the product.

## 5. Getting started

### Note – optimising reception



"DIR3300SBT" has an antenna connection for external antennas with a coaxial connection. A suitable telescopic antenna that allows DAB, DAB+ and FM reception is included in the extent of delivery. Alternatively, you can use an active or passive antenna to improve the reception or to adapt it to your requirements.

Please note:

- Always pull the antenna out completely.
- We recommend you adjust the antenna vertically to ensure optimal reception.



## 5.1 General notes on use

### 5.1.1 Switch On/Off/Standby

- Press [POWER/VOLUME/ENTER/NAVIGATE] (11) to switch on the radio.
- Press and hold [POWER/VOLUME/ENTER/NAVIGATE] (11) for 3 seconds to switch the radio off (standby).
- To completely switch off the device, disconnect it from the power supply.

### 5.1.2 Navigation and controls

- After pressing a shortcut button, navigate through the menu items using.
- Select the individual menu items by turning [POWER/VOLUME/ENTER/NAVIGATE] (11).
- Confirm the selection by pressing [POWER/VOLUME/ENTER/NAVIGATE] (11).

### 5.1.3 Volume adjustment/mute

- Turn the volume up (right) or down (left) by turning [POWER/VOLUME/ENTER/NAVIGATE] (11) accordingly.
- Press [M] on the remote control to mute the radio.
- Press [M] again on the remote control to reset the volume to the value before it was muted.

## 5.2 Connecting and starting up

### Warning



- Only operate the product from a socket that has been approved for the device. The socket must be installed close to the product and must be easily accessible.
- Disconnect the product from the power supply using the On/Off switch – if this is not available, unplug the power cord from the socket.
- If using a multi-socket power strip, make sure that the total power consumption of all connected devices does not exceed the power strip's maximum throughput rating.
- If you will not be using the product for a prolonged period, disconnect it from mains power.

- Connect the power supply to the mains connection (12) on the back of the radio.
- Connect the network cable to a properly installed and easily accessible network socket.
- Wait until the radio has initialised fully.
- Press [POWER/VOLUME/ENTER/NAVIGATE] (11) to switch on the radio.

### Note – switching on for the first time



- The Setup Wizard starts up automatically when the device is turned on for the first time.
- The default used language is English.
- You can skip the Wizard and start it up again later in German.

Once the product has been connected to mains power, initialisation takes place. The radio starts up.

To assist you with the first-time setup of the radio, a **Setup Wizard** is provided.

## 5.3 General notes on use

### Notes on use



- These operating instructions always relate to operation using the controls on the device. Functions that are only usable by **app** or remote control are explained separately.
- For information on the buttons on the remote control and their functions (▲) that correspond to the control buttons on the device, please see the **Controls and displays**.
- [OK] and the navigation button ► on the remote control correspond to pressing [POWER/VOLUME/ENTER/NAVIGATE] (11).
- The navigation button ◀ on the remote control corresponds to [←] (10) on the front of the radio.
- The navigation buttons ▲/▼ correspond to turning [POWER/VOLUME/ENTER/NAVIGATE] (11) to the left and right on the front of the radio.
- When a selection among menu items is to be made (such as **YES** or **NO**), the one currently selected has a light-coloured background fill.
- In menus offering a variety of different options (such as Equalizer, Update, and so on), the currently selected option is marked with #.

### Navigation and controls

- Select the individual menu items by turning [POWER/VOLUME/ENTER/NAVIGATE] (11).
  - Confirm the selection by pressing [POWER/VOLUME/ENTER/NAVIGATE] (11).
  - After pressing a shortcut button, navigate amongst the menu items using [VOLUME/ENTER/NAVIGATE] (11).
- Entering passwords, search terms, and so on.**
- Use [POWER/VOLUME/ENTER/NAVIGATE] (11) to select each individual number and/or letter and confirm the selection by pressing [POWER/VOLUME/ENTER/NAVIGATE] (11).



- To make corrections, select [**BKSP** / <-] and confirm. The last input made is deleted.
- To cancel input, select [**CANCEL**] and confirm.
- Once your input is complete, select [**OK**] and confirm to finish.

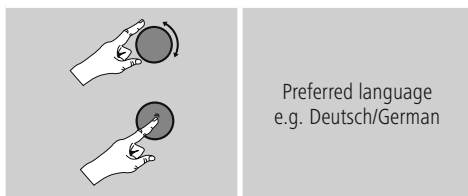
### Additional information

Depending on the operating mode and stations available, pressing **[i]** (4) displays additional information:

- **Description**  
Indicates the radio station, the current programme, contents, subjects, etc.
- **Genre**  
The genre (music style) of the station is shown.
- **Reliability/signal strength**
- **Bit rate**  
The currently received digital bit rate of the received station is displayed.
- **Channel information**
- **Current time**
- **Today's date**

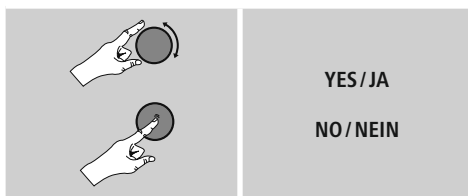
## 5.4 Initial setup

When it is first connected to the power supply, a list of available languages for the menu is displayed. Proceed as follows to set your desired language:



### Setup wizard

Once a language has been set, the first-time setup can be carried out via the setup wizard (**YES**)/ or skipped (**NO**):



### Note – Starting up with or without the setup wizard **[i]**

- We recommend using the setup wizard (**YES**) for quick and easy first-time setup (setting of the time, date, internet connection, etc.).
- If you wish to skip setup with the setup wizard anyway, choose **NO**. All of the settings configured by the setup wizard can be configured or changed individually in the **System settings** menu. Alternatively, you may restart the setup wizard at any time.
- Next, choose **YES** or **NO** to define whether or not the setup wizard should start automatically next time the radio is started up. You are in the **main menu**.



## Date/Time

### 12/24-hour format

#### • Auto update

##### • Update from DAB/FM

If automatic time and date adjustment is activated, the device receives time and date information from the station over the FM/DAB/DAB+ radio network. This is the best way to ensure that the clock will run accurately and the alarm will trigger at the correct time, even after power outages.

##### • Update from Internet

Choose this option to set the time and date automatically via the Internet connection. Also select the time zone of your location, as well as, if wished (ON) – adjustment to summer/winter time.

##### • No update

The time and date (DD-MM-YYYY) must be set manually; no automatic calibration takes place.

## Network wizard – Configuration of network connection

### Note – Reference to a different part of these operating instructions



Because this chapter is extensive, please follow the directions in section **16.2.1 Network wizard – Configuration of Internet connection / Search**.

Once the network wizard has finished, the setup wizard is finished as well. The display shows a message to this effect. Confirm completion by pressing [POWER/VOLUME/ENTER/NAVIGATE] (11), to go to the **main menu**.

## 6. Main menu/modes

This device supports radio reception via the Internet, DAB/DAB+ and FM.

The main menu contains the various operating modes as well as other options that are explained separately in the following chapters:

### 7. Internet radio

### 8. Podcasts

### 9. Spotify Connect

### 10. DAB/DAB+

### 11. FM

### 12. Bluetooth

### 13. Sleep

### 14. Alarm

### 15. Other connection options

### 16. System settings

Select amongst the available operating modes by repeatedly pressing [M] (8).

During playback, the current operating mode appears at the top left-hand edge of the screen.

## 7. Internet radio

### Note



If necessary, it is possible to switch providers in order to make all features and functions of the product available.

From the main menu or after pressing [M] (8) repeatedly, activate **Internet Radio** mode on the radio.

Alternatively, press [IR] on the remote control to switch directly to this operating mode.

### 7.1 Station search

This radio offers various ways to search for stations.

- Use [POWER/VOLUME/ENTER/NAVIGATE] (11) to navigate through the individual search functions and their options.
- Once you have found a station you like, confirm by pressing [POWER/VOLUME/ENTER/NAVIGATE] (11). The radio starts playing the selected station.





### 7.1.1 Search by country or region

To search for a station by continent, country and region, proceed as follows:

- Press **[⚙]** (7) to access the Settings menu.
- Use **[POWER/VOLUME/ENTER/NAVIGATE]** (11) to navigate to the "Station list" menu item.
- Confirm the selection by pressing **[POWER/VOLUME/ENTER/NAVIGATE]** (11).
- Use **[POWER/VOLUME/ENTER/NAVIGATE]** (11) to navigate to the "Countries" menu item. Confirm the selection by pressing **[POWER/VOLUME/ENTER/NAVIGATE]** (11).

Once you have restricted the results to a certain country or region, select a station from the complete list or from a list sorted by genre.

### 7.1.2 Search by genre

To search for a station of a certain genre or subject focus, proceed as follows:

- Press **[⚙]** (7) to access the Settings menu.
- Use **[POWER/VOLUME/ENTER/NAVIGATE]** (11) to navigate to the "Station list" menu item.
- Confirm the selection by pressing **[POWER/VOLUME/ENTER/NAVIGATE]** (11).
- Use **[POWER/VOLUME/ENTER/NAVIGATE]** (11) to navigate to the "Discover" menu item. Confirm the selection by pressing **[POWER/VOLUME/ENTER/NAVIGATE]** (11).

Once you have restricted the results to a certain genre, select a station from a list of all stations available, or from a pre-selected list, or from a list sorted by country.

### 7.1.3 Search by name

If you know the name of the desired station, you can search for it directly:

- Press **[⚙]** (7) to access the Settings menu.
- Use **[POWER/VOLUME/ENTER/NAVIGATE]** (11) to navigate to the "Station list" menu item.
- Confirm the selection by pressing **[POWER/VOLUME/ENTER/NAVIGATE]** (11).
- Use **[POWER/VOLUME/ENTER/NAVIGATE]** (11) to navigate to the "Search" menu item. Confirm the selection by pressing **[POWER/VOLUME/ENTER/NAVIGATE]** (11).

Enter the complete name, or a part thereof, in the input screen and select **[OK]** to start the search. You receive a list of all available stations whose names contain the search key.

### 7.1.4 Popular stations

You can find a selection of the most popular stations as follows:

- Press **[⚙]** (7) to access the Settings menu.
- Use **[POWER/VOLUME/ENTER/NAVIGATE]** (11) to navigate to the "Station list" menu item.
- Confirm the selection by pressing **[POWER/VOLUME/ENTER/NAVIGATE]** (11).
- Use **[POWER/VOLUME/ENTER/NAVIGATE]** (11) to navigate to the "Popular" menu item and select your preferred station.

### 7.1.5 Local stations

To search for stations from your own country (the country in which the radio is currently located), proceed as follows:

- Press **[⚙]** (7) to access the Settings menu.
- Use **[POWER/VOLUME/ENTER/NAVIGATE]** (11) to navigate to the "Station list" menu item.
- Confirm the selection by pressing **[POWER/VOLUME/ENTER/NAVIGATE]** (11).
- Use **[POWER/VOLUME/ENTER/NAVIGATE]** (11) to navigate to the "Local <Country>" menu item. Confirm the selection by pressing **[POWER/VOLUME/ENTER/NAVIGATE]** (11).
- Use **[POWER/VOLUME/ENTER/NAVIGATE]** (11) to navigate to your preferred station.

#### Note

Replace the <Country> placeholder with the country you are currently located in.



You can filter this local list by genre, or select a station from the complete list, or select from a pre-selected list.



---

## 7.2 Favourites (local)

You can save up to 20 of your favourite stations for quick and direct access.

### 7.2.1 Assigning the favourites shortcut buttons

- Set the station that you would like to save to a favourites memory slot.
- Once the station is playing, press and hold the relevant shortcut button for around 3 seconds.
- The selection will be confirmed by the display showing "Program (1-2, depending on the shortcut button) saved".
- During playback, the favourite memory slot is displayed at the bottom of the screen.

#### Note

Favourites cannot be deleted. If all 20 station memory slots are filled and you wish to save a new station, choose one of the occupied slots. The station in this slot will be overwritten with the new station.



### 7.2.2 Calling up shortcut button favourites

To call up a stored station, press the corresponding shortcut button.

### 7.2.3 Assigning the list of favourites (3-20)

- Set the station that you would like to save to a favourites memory slot.
- If the stations is playing, press and hold [H] (3) for approx. 3 seconds until the Presets list opens up.
- Navigate to the preferred memory slot and confirm your selection by pressing [POWER/VOLUME/ENTER/NAVIGATE] (11).
- The selection will be confirmed by the display showing "Program (3-20, depending on the memory slot) saved".

### 7.2.4 Calling up a station from the Favourites list (3-20)

- Press [H] (3) to call up the Favourites list.
- Use [POWER/VOLUME/ENTER/NAVIGATE] (11) to navigate to the preferred station and confirm your selection by pressing [POWER/VOLUME/ENTER/NAVIGATE] (11).

## 8. Podcasts

Podcasts are programs on various topics and include, for example, talk shows, news and much more. Podcasts can be downloaded from the Internet.

There are normally approximately 10,000 programs available. Similarly to radio stations, the radio makes it possible to filter a large number of Podcasts, or to search the entire database for a matching result.

From the main menu or after pressing [M] (8) repeatedly, activate **Podcasts** mode on the radio:

### 8.1 Podcast search

#### 8.1.1 Search by country or region

To search for a podcast by continent, country and region, proceed as follows:

- Press [G] (7) to access the Settings menu.
- Use [POWER/VOLUME/ENTER/NAVIGATE] (11) to navigate to the "Podcasts list" menu item.
- Confirm the selection by pressing [POWER/VOLUME/ENTER/NAVIGATE] (11).
- Use [POWER/VOLUME/ENTER/NAVIGATE] (11) to navigate to the "Countries" menu item and select your preferred station.

Once you have restricted the results to a certain country or region, select a station from the complete list or from a list sorted by genre.

#### 8.1.2 Search by format (subjects or categories)


To search for a podcast by continent, country and region, proceed as follows:

- Press [G] (7) to access the Settings menu.
- Use [POWER/VOLUME/ENTER/NAVIGATE] (11) to navigate to the "Podcasts list" menu item.
- Confirm the selection by pressing [POWER/VOLUME/ENTER/NAVIGATE] (11).
- Use [POWER/VOLUME/ENTER/NAVIGATE] (11) to navigate to the "Discover" menu item and select your preferred station.



### 8.1.3 Search by name

If you know the name of the desired podcast, you can search for it directly:

- Press  (7) to access the Settings menu.
- Use **[POWER/VOLUME/ENTER/NAVIGATE]** (11) to navigate to the "Podcasts list" menu item.
- Confirm the selection by pressing **[POWER/VOLUME/ENTER/NAVIGATE]** (11).
- Use **[POWER/VOLUME/ENTER/NAVIGATE]** (11) to navigate to the "Search" menu item.

Enter the complete podcast name, or a part thereof, in the input screen and select **[OK]** to start the search. You receive a list of all available podcasts whose names contain the search key.

### 8.2 Favourites (local)

You can save up to 20 of your favourite stations for quick and direct access.

#### 8.2.1 Assigning the favourites shortcut buttons

- Set the station that you would like to save to a favourites memory slot.
- Once the station is playing, press and hold the relevant shortcut button for around 3 seconds.
- The selection will be confirmed by the display showing "Program (1-2, depending on the shortcut button) saved".
- During playback, the favourite memory slot is displayed at the bottom of the screen.

#### Note


Favourites cannot be deleted. If all 20 station memory slots are filled and you wish to save a new station, choose one of the occupied slots. The station in this slot will be overwritten with the new station.




#### 8.2.2 Calling up shortcut button favourites

To call up a stored station, press the corresponding shortcut button.

### 8.2.3 Assigning the list of favourites (3-20)

- Set the station that you would like to save to a favourites memory slot.
- If the station is playing, press and hold  (3) for approx. 3 seconds until the Favourites list opens.
- Navigate to the preferred memory slot and confirm your selection by pressing **[POWER/VOLUME/ENTER/NAVIGATE]** (11).
- The selection will be confirmed by the display showing "Program (3-20, depending on the memory slot) saved".

#### 8.2.4 Calling up a station from the Favourites list (3-20)

- Press  (3) to call up the Favourites list.
- Use **[POWER/VOLUME/ENTER/NAVIGATE]** (11) to navigate to the preferred station and confirm your selection by pressing **[POWER/VOLUME/ENTER/NAVIGATE]** (11).



## 9. Spotify

Spotify Connect gives you access to millions of songs. You can listen to them on your radio, on the go using your smartphone, or at your PC.

#### Requirements:

- You must have the Spotify app installed on your Android or iOS device.
- It can be downloaded from the Play Store or the Apple App Store. Once the app is installed, start it and log into your account (or, if you do not have an account, register a new one).
- You will require a Spotify account (see [www.spotify.de](http://www.spotify.de) for more information).
- The radio must be on the same network as the Android or iOS device with the Spotify app installed.

#### Use:

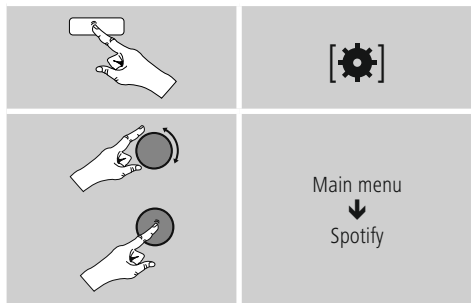
- In the Spotify app, start playback of a playlist or track as usual.
- The usual playback information is displayed, such as the album cover, track, etc.
- At the bottom edge of the screen, the Spotify Connect logo  is shown next to **Available devices**.
- Choose  **Available devices** to access an overview of all devices available on the network.
- Select the radio. The audio is now played back on the radio.

Once the connection has been established, the Spotify Connect logo  and the device designation are displayed in green.



### After successful initial connection:

From the main menu, or after pressing [M] (8) repeatedly, activate **Spotify (Spotify Connect)** mode on the tuner:



- Press [POWER/VOLUME/ENTER/NAVIGATE] (11) (or [▶] on the remote control) to start playback.
- Alternatively, you can control the radio – e.g. skip to a different track or adjust the volume – using the remote control, the Smart Radio app, or the Spotify app.

### 10. Digital radio (DAB/DAB+)

The radio receives all established digital radio frequencies in the range of 174 MHz to 240 MHz (band III, channel 5A to 13F).

From the main menu or after pressing [M] (8) repeatedly, activate operating mode **DAB (DAB Radio)** on the radio.

Alternatively, press [DAB] on the remote control to switch directly to this operating mode.

#### 10.1 Search/Automatic search

The automatic DAB channel search scans the DAB band III for available stations. After the station search, all interference-free stations are saved in alphabetical order. In Stations list a ? is displayed in front of the station names of stations found during a previous scan but which cannot currently be received. The automatic DAB station search starts automatically when DAB mode is started for the first time; it is indicated by **Scanning...** and a status bar on the display.

If you would like to start the search again, proceed as follows:

- Press [⚙] (7) to access the Settings menu.
- Use [POWER/VOLUME/ENTER/NAVIGATE] (11) to navigate to the "Full scan" menu item.
- Confirm the selection by pressing [POWER/VOLUME/ENTER/NAVIGATE] (11).
- Wait until the search process has completed.
- The available stations are now displayed in the list of stations.

#### 10.2 Station list

You can call up the station list in DAB mode at any time. To do this, proceed as follows:

- Press [↶] (10) during playback to navigate through the available stations in ascending alphabetical order using [POWER/VOLUME/ENTER/NAVIGATE] (11).
- Confirm the selection by pressing [POWER/VOLUME/ENTER/NAVIGATE] (11).
- The device starts playback automatically.

#### Note



The list of stations contains all stations that were found on the last station search. A further station search – as described in [10.1 Search/Automatic search](#) – can be started. A station's reception quality depends on factors such as the weather, location and orientation of the aerial. If a station shown in the list of stations is not available, changing the orientation of the aerial or the location of the radio may help. Stations that are no longer available can be removed from the list of stations as described in [10.3 Edit station list](#).

#### 10.3 Edit station list

To remove stations that are not currently in the reception area, from your station list, proceed as follows:

- Press [⚙] (7) to access the Settings menu.
- Use [POWER/VOLUME/ENTER/NAVIGATE] (11) to navigate to the "Delete inactive stations" menu item.
- Confirm the selection by pressing [POWER/VOLUME/ENTER/NAVIGATE] (11).

If you answer **YES**, then all currently unavailable stations will be removed from the station list.

#### Note



To keep the list of stations up to date, we recommend updating the list regularly with a full station search (see [10.1 Search/Automatic search](#)).



---

## 10.4 Favourites (local)

You can save up to 20 of your favourite stations for quick and direct access.

### 10.4.1 Assigning the favourites shortcut buttons

- Set the station that you would like to save to a favourites memory slot.
- Once the station is playing, press and hold the relevant shortcut button for around 3 seconds.
- The selection will be confirmed by the display showing "Program (1-2, depending on the shortcut button) saved".
- During playback, the favourite memory slot is displayed at the bottom of the screen.

#### Note



Favourites cannot be deleted. If all 20 station memory slots are filled and you wish to save a new station, choose one of the occupied slots. The station in this slot will be overwritten with the new station.

### 10.4.2 Calling up shortcut button favourites

To call up a stored station, press the corresponding shortcut button.

### 10.4.3 Assigning the list of favourites (3-20)

- Set the station that you would like to save to a favourites memory slot.
- If the station is playing, press and hold (3) for approx. 3 seconds until the Favourites list opens.
- Navigate to the preferred memory slot and confirm your selection by pressing [POWER/VOLUME/ENTER/NAVIGATE] (11).
- The selection will be confirmed by the display showing "Program (3-20, depending on the memory slot) saved".

#### 10.4.4 Calling up a station from the Favourites list (3-20)

- Press (3) to call up the Favourites list.
- Use [POWER/VOLUME/ENTER/NAVIGATE] (11) to navigate to the preferred station and confirm your selection by pressing [POWER/VOLUME/ENTER/NAVIGATE] (11).

## 10.5 DRC (Dynamic Range Control)

Some DAB network radio stations support a volume control feature that actively takes effect during playback. If the volume suddenly increases, DRC automatically lowers it. If the volume suddenly becomes quieter, DRC automatically raises it. The same happens when playback is suddenly quiet. The radio then increases the volume again.

**DRC high:** total equalisation of different volumes. Strong compression can audibly reduce the dynamics of a music title.

**DRC low:** partial equalisation of different volumes. More subtle compression, without too much loss of dynamics.

**DRC off:** no equalisation

Proceed as follows to do the settings:

- Press (7) to access the Settings menu.
- Use [POWER/VOLUME/ENTER/NAVIGATE] (11) to navigate to the "Volume adjustment" menu item.
- Confirm the selection by pressing [POWER/VOLUME/ENTER/NAVIGATE] (11) and select your desired setting.

## 10.6 Station sequence

By default the radio sorts stations into alphabetical order. You can also sort by signal strength or ensemble. To change the sorting order, proceed as follows:

- Press (7) to access the Settings menu.
- Use [POWER/VOLUME/ENTER/NAVIGATE] (11) to navigate to the "Station sequence" menu item.
- Choose between "Alphabetical", "Provider" and "Valid" and confirm your selection by pressing [POWER/VOLUME/ENTER/NAVIGATE] (11).



## 11. FM

From the main menu or after pressing **[M]** (8) repeatedly, activate operating mode **FM (FM Radio)** on the radio.

Alternatively, press **[FM]** on the remote control to switch directly to this operating mode.

Stations that broadcast additional information regarding the station and the programme, are highlighted on the display with an RDS icon (Radio Data System). This additional information is displayed by pressing **[i]** (4).

### 11.1 Search setting

The search setting allows you to determine whether stations with low signal strength are ignored during the automatic search. Proceed as follows:

- Press **[⚙]** (7) to access the Settings menu.
- Use **[POWER/VOLUME/ENTER/NAVIGATE]** (11) to navigate to the "Search settings" menu item.
- Confirm the selection by pressing **[POWER/VOLUME/ENTER/NAVIGATE]** (11).
- To have the search run stop only at stations with high signal strength, select **Strong stations only**. Otherwise, the search run will stop at every station for which a signal is received.

#### Note



By default, the "Strong stations only" method is selected.

### 11.2 Search/Automatic search

- Press **[POWER/VOLUME/ENTER/NAVIGATE]** (11) to start a station search.
- The radio stops the search and starts playback when it finds a station.
- Pressing **[POWER/VOLUME/ENTER/NAVIGATE]** (11) again continues the search process until the next station is found.

### 11.3 Manual station search

With manual station settings, you can define the required frequency yourself and also receive stations that had signals too weak to pick up on the automatic station search and which therefore were not included.

- Press **[↔]** (10) to switch to the manual station settings.
- Turn **[POWER/VOLUME/ENTER/NAVIGATE]** (11) (left: - 0.05 MHz / right: + 0.05 MHz) until the desired frequency is displayed. Wait a moment until playback of the received station signal begins.
- Press **[↔]** (10) again to exit the manual station settings.

### 11.4 Favourites (local)

You can save up to 20 of your favourite stations for quick and direct access.

#### 11.4.1 Assigning the favourites shortcut buttons

- Set the station that you would like to save to a favourites memory slot.
- Once the station is playing, press and hold the relevant shortcut button for around 3 seconds.
- The selection will be confirmed by the display showing "Program (1-2, depending on the shortcut button) saved".
- During playback, the favourite memory slot is displayed at the bottom of the screen.

#### Note



Favourites cannot be deleted. If all 20 station memory slots are filled and you wish to save a new station, choose one of the occupied slots. The station in this slot will be overwritten with the new station.

#### 11.4.2 Calling up shortcut button favourites

To call up a stored station, press the corresponding shortcut button.

#### 11.4.3 Assigning the list of favourites (3-20)

- Set the station that you would like to save to a favourites memory slot.
- If the station is playing, press and hold **[H]** (3) for approx. 3 seconds until the Favourites list opens.
- Navigate to the preferred memory slot and confirm your selection by pressing **[POWER/VOLUME/ENTER/NAVIGATE]** (11).
- The selection will be confirmed by the display showing "Program (3-20, depending on the memory slot) saved".



#### 11.4.4 Calling up a station from the Favourites list (3-20)

- Press [F] (3) to call up the Favourites list.
- Use [POWER/VOLUME/ENTER/NAVIGATE] (11) to navigate to the preferred station and confirm your selection by pressing [POWER/VOLUME/ENTER/NAVIGATE] (11).

#### 11.5 Audio setting

For some stations with a weak signal, quality can be slightly improved by playing them in mono quality. You can enable this function in the menu, and the radio will automatically switch to mono reception when signal quality is poor.

- To change the audio setting, proceed as follows:
- Press [G] (7) to access the Settings menu.
  - Use [POWER/VOLUME/ENTER/NAVIGATE] (11) to navigate to the "Audio setting" menu item.
  - Confirm the selection by pressing [POWER/VOLUME/ENTER/NAVIGATE] (11) and select your desired setting.

### 12. Bluetooth®

You can pair your terminal device with the radio using Bluetooth and use it as a playback device. You can control playback directly on the terminal device. You can adjust the volume on the radio, as well.

#### Note – Bluetooth®



- Check whether your mobile device (smartphone, tablet PC, etc.) is Bluetooth-capable.
- Note that the maximum range for Bluetooth® is 10 metres without obstacles such as walls, people, etc.
- The connection may be disrupted by other Bluetooth® devices/connections in the vicinity.
- It is only possible to connect the radio to one terminal device.
- Note that compatibility depends on the supported Bluetooth® profiles as well as the Bluetooth® versions being used. (See: Technical data in the operating instructions for the respective device)

Repeatedly press [M] (8) to enable Bluetooth® operating mode on the radio:



Alternatively, press [BT] on the remote control to switch directly to this operating mode.

### 12.1 Bluetooth® pairing

- Make sure that your Bluetooth® capable terminal device is switched on and that Bluetooth® is activated.
- Repeatedly press [M] (8) to enable Bluetooth® operating mode on the radio:



- Press [G] (7) to access the Settings menu.
- Use [POWER/VOLUME/ENTER/NAVIGATE] (11) to navigate to the "Setup Bluetooth" menu item.
- Open the Bluetooth® settings on your device and wait until the list of found Bluetooth® devices shows **DIR3300SBT/DIR3200SBT**.
- If necessary, start searching for Bluetooth® devices on your device.
- Select **DIR3300SBT/DIR3200SBT** and wait until radio is listed as connected in the Bluetooth® settings of your device.
- Your device is also shown as connected on the radio display.
- Start and control audio playback using the controls on your device.

#### Note – Bluetooth® password



Some devices require a password in order to connect to another Bluetooth® device.

- If your device requests a password to connect to the loudspeaker, enter **0000**.



## 12.2 Automatic Bluetooth® connection (once pairing has been performed)

- Devices that have already been paired with the radio are automatically stored on the radio.

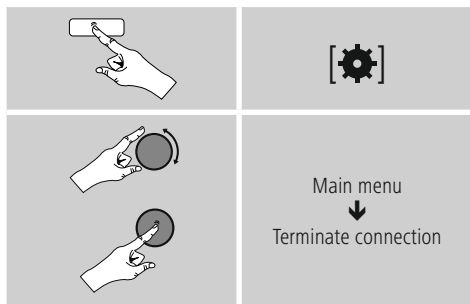
### Note – connection impaired



After the radio and terminal device have been paired, a connection is established automatically. If the Bluetooth® connection is not established automatically, check the following:

- In your device's Bluetooth® settings, check that **DIR3300SBT/DIR3200SBT** is connected. If not, repeat the steps listed under Bluetooth® pairing.
- Check that your device and the radio are less than 10 metres apart. If not, move them closer together.
- Check whether obstacles are impairing the range. If so, move the devices closer together.

## 12.3 Terminating the Bluetooth® connection



- Then turn **[POWER/VOLUME/ENTER/NAVIGATE]** (11) to select the **YES** button and confirm the termination of the Bluetooth connection by pressing **[POWER/VOLUME/ENTER/NAVIGATE]** (11).

## 13. Sleep

The radio has a timer function, which switches the radio to standby mode after a pre-defined length of time, regardless of its operating mode.

- Press **[⚙️]** (7) to access the Settings menu.
- Use **[POWER/VOLUME/ENTER/NAVIGATE]** (11) to navigate to the "Main menu" menu item.
- Confirm the selection by pressing **[POWER/VOLUME/ENTER/NAVIGATE]** (11).
- Use **[POWER/VOLUME/ENTER/NAVIGATE]** (11) to navigate to the "Sleep" menu item.
- Use **[POWER/VOLUME/ENTER/NAVIGATE]** (11) to set the timer value.
- Confirm your setting by pressing **[POWER/VOLUME/ENTER/NAVIGATE]** (11).
- If the sleep timer is activated, this is indicated in the playback screen by **[Zz]**.

### Note



- When the sleep timer is activated, the display is automatically darkened (brightness level: low).
- You can adjust this under System settings -> Backlight.

## 14. Alarm

The radio has two individually adjustable alarm times.

### 14.1 Alarm settings

You can access the alarm settings as follows:

- Press **[⚙️]** (7) to access the Settings menu.
- Use **[POWER/VOLUME/ENTER/NAVIGATE]** (11) to navigate to the "Main menu" menu item.
- Confirm the selection by pressing **[POWER/VOLUME/ENTER/NAVIGATE]** (11).
- Use **[POWER/VOLUME/ENTER/NAVIGATE]** (11) to navigate to the "Alarm" menu item.

Alarm 1 and alarm 2 are configured identically and allow two separate alarm times to be saved. Select Alarm 1 or 2 and confirm your selection by pressing **[POWER/VOLUME/ENTER/NAVIGATE]** (11).

Set the following details using **[POWER/VOLUME/ENTER/NAVIGATE]** (11).

### Mode:

Choose when the alarm is to activate:

Off – Daily – Once – Weekdays – Weekends





### Time:

First choose the hour, then the minute at which the alarm is to activate.

### Mode:

Set whether you wish to be woken by an alarm tone (**buzzer**), by **DAB, FM** or by the **Internet radio**.

### Programme:

If you selected **Internet radio/DAB/FM**, choose which station you wish to be woken with. You can choose any of the 20 favourite slots or the **Last listened**.

### Volume:

You can set the volume at which the alarm sound should be played. This setting makes it irrelevant how loud you last listened to the radio.

### Saving:

Select **Off/On** to complete your alarm settings.

#### Note

It is recommended to allow the device to update the time automatically. This ensures that the time is always correct even if there is a separation of power supply – for example a power cut.



## 14.2 Activating/deactivating the alarm

- Confirm the menu item **Save** in alarm settings to activate the alarm.
- Disable the alarm by setting the **Mode** to **Off**.

## 14.3 Stopping the alarm / Snooze function

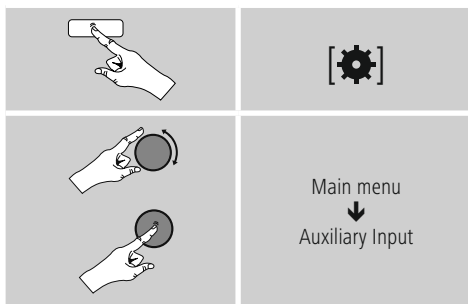
- If the alarm is triggered, press and hold [**POWER/VOLUME/ENTER/NAVIGATE**] (11) for approx. 3 seconds to stop the alarm.
- Briefly press [**POWER/VOLUME/ENTER/NAVIGATE**] (11) when the alarm goes off to activate snooze.
- The alarm turns off for the selected time interval (5/10 minutes) before activating once again.

## 15. Other connection options

### 15.1 Auxiliary Input

Via the analogue audio input (**AUX IN** socket) you can connect mobile devices (for example smartphone, tablet PC, M3 player etc.) to the radio and play the audio files using the radio's speakers.

- From the main menu or after pressing [**M**] (8) repeatedly, enable **Auxiliary Input (Aux in)** mode on the radio:



Alternatively, press [**AUX**] on the remote control to switch directly to this operating mode.

- Connect your mobile terminal device and the audio input (**AUX IN** socket) (13) on the radio using a 3.5 mm audio cable (jack cable).
- Start and control audio playback accordingly via the connected device.

### 15.2 Connection via LINE OUT

You can connect your loudspeaker, for example, to the radio's analogue audio output and play its audio signals via the loudspeaker.

#### Note

- Switch the radio off before connecting a device to it.
- Do not bend or crush the cable.
- For playback via the analogue audio connection, connect a 3.5 mm RCA cable to the radio's analogue audio output (15) and the loudspeaker's analogue audio input.
- Press [**POWER/VOLUME/ENTER/NAVIGATE**] (11) to switch on the radio.
- The radio's audio signal is now output via the loudspeaker.



### 15.3 Connection via headphone jack

You can connect your headphones to the radio's headphone jack and play its audio signals via the headphones.

#### Warning – high volume



- High sound pressure!
- There is a risk of hearing damage.
- To prevent any loss of hearing, avoid listening at loud volumes for prolonged periods.
- Always keep the volume at a sensible level. High volumes can – even for just short periods – lead to hearing damage.



#### Note



- Reduce the volume of the radio.
  - Switch the radio off before connecting headphones to it.
  - Note the warning and safety information included in the operating instructions of your headphones.
  - Do not bend or crush the cable.
- For playback via the headphone jack, connect the 3.5 mm RCA plug from your headphones to the headphone jack (14) on the radio.
- Press [**POWER/VOLUME/ENTER/NAVIGATE**] (11) to switch on the radio.
  - The radio's audio signal is now output via the headphones.

### 15.4 Connection via USB interface

The USB interface (16) allows you to connect your device to the radio and charge it.

#### Warning – Connection of devices



- Before connecting a device, check whether it can be adequately supplied with the charger's current delivery.
  - Ensure that the output of the connected device does not exceed 10 W.
  - Note the instructions in your device's operating manual.
- Connect your device to the radio's USB charging socket (16) using a suitable USB cable. To do this, consult the operating instructions for the USB cable you are using.
- Once the device is fully charged, the charging process is ended automatically.
  - Disconnect the device from the USB charging socket if you wish to interrupt the charging process or when the device is fully charged.

## 16. System settings

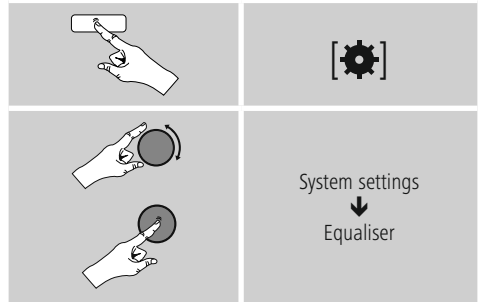
You can modify all settings and access important information about the radio in the System settings.

### 16.1 Equaliser

The equaliser allows you to adjust the sound of the radio to suit your preferences by amplifying or reducing the amount of bass or treble in the audio.

You can choose from preconfigured profiles, adjusted to suit a variety of music genres, or create your own custom profile.

- To set the equaliser, proceed as follows:



- Use [**POWER/VOLUME/ENTER/NAVIGATE**] (11) to select one of the pre-configured profiles.
- To create your own equaliser profile, choose the **My EQ setting** option.
- This takes you to the **bass, treble** and **loudness** settings (volume amplification).
- To change a value, press [**POWER/VOLUME/ENTER/NAVIGATE**] (11) on the relevant selection and change the values by turning [**POWER/VOLUME/ENTER/NAVIGATE**] (11) left or right. If playback is already started when you modify these settings, you can hear the changes in the audio immediately.
- Confirm the selection by pressing [**POWER/VOLUME/ENTER/NAVIGATE**] (11) again.
- Once you have made all the settings, press [**↔**] (10) on the radio and confirm that the settings are to be saved by pressing [**POWER/VOLUME/ENTER/NAVIGATE**] (11).
- To use the new profile, choose the **My EQ** option.



---

## 16.2 Internet settings

### 16.2.1 Network wizard – Configuration of Internet connection / Search

The **network wizard** helps you set up a connection between the radio and the Internet. More methods of configuration and detailed information are amplified subsequently.

- You can start the **Network wizard** as follows:
- Press [⚙️] (7) to go to the system settings.
- Use [POWER/VOLUME/ENTER/NAVIGATE] (11) to navigate to the "Internet settings" menu item.
- Confirm the selection by pressing [POWER/VOLUME/ENTER/NAVIGATE] (11).
- Use [POWER/VOLUME/ENTER/NAVIGATE] (11) to navigate to the "Network wizard" menu item.
- When the wizard is started, the radio searches for WLAN (WiFi) connections and then shows a list of the available networks.
- Turn [POWER/VOLUME/ENTER/NAVIGATE] (11) to switch between the networks found. At the bottom of the list are options to restart the search ("[Rescan]") or configure the connection yourself ("[Manual config]").
- If your network is not found or the SSID (Service Set Identification, that is, the name of your network) is not shown, the network may be hidden or out of range. In this case, try manual configuration.

### 16.2.2 Wireless network connection (WLAN)

Depending on the network, there are a number of ways to connect to it.

Networks that support connection via WPS (Wi-Fi Protected Setup) are identified in the list with the prefix "[WPS...]". Other connections are either open networks or connections protected with a PSK, or Pre-Shared-Key.

#### WPS/PSK/open network connection

WPS allows simple and nevertheless protected connection of the radio to the network. Two options are available for this purpose:

The connection can be set up by means of PBC, or Push-Button Configuration, or by the PIN procedure, in which the web interface of your router prompts you to enter a randomly generated sequence of numbers.

#### PBC setup

- Select your desired network. (Indicated by the prefix "[WPS...]")
- In the WPS menu, then select the "**Push Button**" option and confirm the selection by pressing [POWER/VOLUME/ENTER/NAVIGATE] (11).
- Press the WPS button on your router or current access point. This can often be done using the web interface, as well.
- Consult the operating instructions of your router or access point for details.
- Once the process has been started on the router or access point, the radio should be able to find and connect to the network.
- Alternatively, PBC setup can be initiated from the radio's Internet settings:
- Press [⚙️] (7) to go to the system settings.
- Use [POWER/VOLUME/ENTER/NAVIGATE] (11) to navigate to the "Internet settings" menu item.
- Confirm the selection by pressing [POWER/VOLUME/ENTER/NAVIGATE] (11).
- Use [POWER/VOLUME/ENTER/NAVIGATE] (11) to navigate to the "PBC Wlan setup" menu item.

#### PIN setup

- Select your desired network. (Indicated by the prefix "[WPS...]")
- In the WPS menu, choose the PIN option and confirm your selection by pressing [POWER/VOLUME/ENTER/NAVIGATE] (11).
- The radio generates an 8-digit code, which must be entered into the web or user interface of your router or access point.
- Consult the corresponding handbook for details on configuring the router or access point.

#### Skip WPS/Pre-Shared Key (PSK) configuration

- Choose the item "**Skip WPS**" to proceed to key entry.
- On networks that do not support WPS, you will go directly to key entry.
- In the input screen, enter the whole key and then confirm with the **OK** button.
- If the key was entered correctly, the radio connects to the access point and establishes the Internet/network connection.



#### Note



- Often the Pre-Shared Key is printed on the back of the router or access point.
- When entering the key, take notice of capitalisation.

### Open network / unsecured network

#### Note



- We recommend against establishing unsecured connections and advise you to always protect your network against unauthorised access.
- If you plan to use an open network, you just have to select the network from the list of available networks and confirm. The radio then connects immediately with the access point.

### 16.2.3 Manual configuration of network connection – wireless (WLAN)

- To manually configure a network connection, proceed as follows:
- Press (7) to go to the system settings.
- Use [POWER/VOLUME/ENTER/NAVIGATE] (11) to navigate to the "Internet settings" menu item.
- Confirm the selection by pressing [POWER/VOLUME/ENTER/NAVIGATE] (11).
- Use [POWER/VOLUME/ENTER/NAVIGATE] (11) to navigate to the "Manual settings" menu item.

### Manual configuration wireless (WLAN) – DHCP enable

- Select the option "Wireless".
- Selection the option "DHCP enable".
- In the input screen, enter the whole SSID (network name) and then confirm with the **OK** button.
- Now choose the security standard used by the network. This can be found in the configuration options of your router or access point.
- Depending on the encryption used, you may need to enter the network key before the connection is established.

### Manual configuration wireless (WLAN) – DHCP disable

This method corresponds to configuration with an active DHCP server (**manual configuration wireless (WLAN) - DHCP enabled**), however you must also enter the network information such as the IP address, subnet mask, gateway address and DNS (primary and secondary). Find this information in the web interface of your router or access point, or if this information is already correctly entered, you can confirm the entry. The radio now attempts to establish the connection.

### 16.2.4 View settings

This is where you will find all of the key information about all network connections that the radio is currently using, or which have been set up, e.g.: MAC address, WLAN region, DHCP enable/disable, SSID, IP address, subnet mask, gateway address, DNS (primary/secondary), etc.

- Press (7) to go to the system settings.
- Use [POWER/VOLUME/ENTER/NAVIGATE] (11) to navigate to the "Internet settings" menu item.
- Confirm the selection by pressing [POWER/VOLUME/ENTER/NAVIGATE] (11).
- Use [POWER/VOLUME/ENTER/NAVIGATE] (11) to navigate to the "Show settings" menu item.

### 16.2.5 Network profile

The radio automatically saves all successful network connections (profiles). This means that re-establishing these connections (for example, after the radio was disconnected from the power supply) does not require you to re-enter the network access information.

To remove network profiles individually, proceed as follows:

- Press (7) to go to the system settings.
- Use [POWER/VOLUME/ENTER/NAVIGATE] (11) to navigate to the "Internet settings" menu item.
- Confirm the selection by pressing [POWER/VOLUME/ENTER/NAVIGATE] (11).
- Use [POWER/VOLUME/ENTER/NAVIGATE] (11) to navigate to the "Remove network profiles" menu item.



- Select the relevant network profile and press **[POWER/VOLUME/ENTER/NAVIGATE]** (11) to remove it.
- Confirm the prompt querying if you want to delete the network profile with **YES**.
- A profile that is currently active, or that is in use, cannot be deleted.

#### Note



- Before giving or selling the radio to someone else, we recommend performing a factory reset.
- This will completely and permanently delete all network information and connections stored on the device.

#### Time/Date settings

To access the time settings, proceed as follows:

- Press **[⚙️]** (7) to go to the system settings.
- Use **[POWER/VOLUME/ENTER/NAVIGATE]** (11) to navigate to the "Time and date" menu item.
- Confirm the selection by pressing **[POWER/VOLUME/ENTER/NAVIGATE]** (11).
- Use **[POWER/VOLUME/ENTER/NAVIGATE]** (11) to navigate to the "Update settings" menu item.

#### Auto update

##### Update from Internet

Choose this option to set the time and date automatically from the internet. Set the timezone of your current location (**Set timezone**) and, if desired, turn on automatic adjustment between summer time and winter time (**Daylight savings -> ON**).

##### Update from DAB/FM

If automatic time and date adjustment is activated, the device receives time and date information from the station over the FM/DAB/DAB+ radio network. This is the best way to ensure that the clock will run accurately and the alarm will trigger at the correct time, even after power outages.

##### No update

The time and date (**DD-MM-YYYY**) must be set manually; no automatic calibration takes place.

#### Time/Date settings

Set the date (**DD-MM-YYYY**) and time (**hh:mm**) manually using **[POWER/VOLUME/ENTER/NAVIGATE]** (11).

#### Format

Choose between 12 and 24 hours format.

#### 16.3 Language

The first time it is used, the radio's default language is English. To change radio's menu language, proceed as follows:

- Press **[⚙️]** (7) to access the Settings menu.
- Use **[POWER/VOLUME/ENTER/NAVIGATE]** (11) to navigate to the "Settings" menu item.
- Confirm the selection by pressing **[POWER/VOLUME/ENTER/NAVIGATE]** (11).
- Use **[POWER/VOLUME/ENTER/NAVIGATE]** (11) to navigate to the "Language" menu item. Confirm the selection by pressing **[POWER/VOLUME/ENTER/NAVIGATE]** (11).
- Use **[POWER/VOLUME/ENTER/NAVIGATE]** (11) to select your preferred system language.
- The language setting currently selected is marked with an asterisk (\*).

#### Note



- The following languages are available: English, Danish, French, German, Italian, Norwegian, Finnish, Swedish, Turkish, Polish, Dutch, Portuguese, Spanish

#### 16.4 Factory reset

To reset the radio to the factory default settings, proceed as follows:

- Press **[⚙️]** (7) to go to the system settings.
- Use **[POWER/VOLUME/ENTER/NAVIGATE]** (11) to navigate to the "Factory settings" menu item.
- Confirm the following prompt with **YES** to reset the radio to the factory default settings. All settings made previously are deleted.
- To abort the deletion process, press **[↩️]** (10) or select **NO**.

#### Note



Resetting to the factory default settings can remedy some problems and malfunctions.

- However, all settings made previously, such as equaliser and favourites, permanently deleted.



## 16.5 Software update

Improvements and new features are always constantly being developed for the software used in our radios to resolve potential errors, increase the range of functions, and so on. We recommend that you always install any available updates on your radio.

### Proceed as follows:

- Press **[⚙️]** (7) to go to the system settings.
- Use **[POWER/VOLUME/ENTER/NAVIGATE]** (11) to navigate to the "Software update" menu item.
- Select **Automatic updates (YES)** to allow the radio to automatically check for new software updates on a regular basis. (Recommendation)
- Choose **Check now** to manually start a check for software updates.

### Warning



- Make sure that the device has a stable power supply before you start a software update.
- Power supply failure during a software update can cause irreparable damage to the radio.

### Note



- Available updates and instructions on how to install them can be found at:  
[www.hama.com](http://www.hama.com) -> 00054227, 00054228, 00054229, 00054230

## 16.6 Info

To check the current software version, radio ID and device designation of your radio, proceed as follows:

- Press **[⚙️]** (7) to go to the system settings.
- Use **[POWER/VOLUME/ENTER/NAVIGATE]** (11) to navigate to the "Info" menu item.
- Confirm the selection by pressing **[POWER/VOLUME/ENTER/NAVIGATE]** (11).

### Note

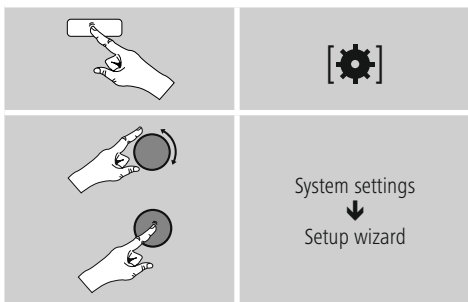


If you require assistance from customer support, please let the agent know the current software version. Problems are frequently resolved through software updates, and your query may be resolved by comparing your software version with the last software version available.

If updates are available, these can be found at [www.hama.com](http://www.hama.com) with the corresponding article number or designation of the radio. You may find update instructions in the article's download area.

## 16.7 Setup wizard

The setup wizard (see **Setup wizard**) can be restarted at any time as follows:



## 16.8 Backlight

### Manual settings

The backlight can be configured for each operating mode (Operation Mode, Standby Mode) separately.

Proceed as follows:

- Press **[⚙️]** (7) and navigate to the "Settings" menu item.
- Select "Backlight" and confirm by pressing **[POWER/VOLUME/ENTER/NAVIGATE]** (11).
- For the **Operation** and **Standby** modes, select from various brightness settings.

### Automatic settings (Sensor)

With the sensor enabled, the backlight is automatically adjusted to the environment and its brightness. In complete darkness (for example, at night in the bedroom), the backlight completely turns off.



To activate the automatic setting (sensor), proceed as follows:

- Press [⚙️] (7) and navigate to the "Settings" menu item.
- Select "Backlight" and confirm by pressing [POWER/VOLUME/ENTER/NAVIGATE] (11).
- Select the "Automatic" setting to activate the brightness sensor.

#### Note



- The brightness sensor is located on the top of the radio.
- Take care not to cover the brightness sensor. Automatic adjustment of the brightness setting is otherwise not possible and the display will remain permanently dark.
- Disable the brightness sensor by placing the radio on a shelf to avoid a permanently dark display.

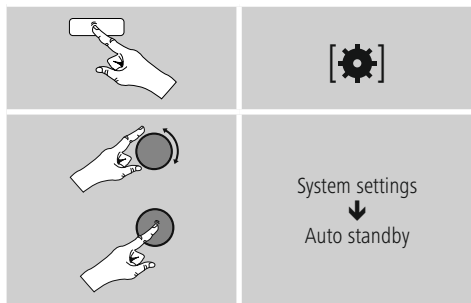
### 16.9 Auto standby

#### Note



- For reasons of environmental protection and to save valuable raw materials, the radio automatically switches to standby mode after 15 minutes as soon as the playback has been switched to a very low volume or if the radio has been muted.

To enable or disable this function, proceed as follows:



## 17. UNDOK – Everything in the palm of your hand

# Powered by UNDOK

The UNDOK app, developed by Frontier Silicon, gives you full control of radios and speakers from your smartphone. Whether you are setting up the device for the first time, specifying settings for the equaliser or managing your favourite stations – UNDOK lets you access all the features from your smartphone or tablet, thereby offering you greater convenience.

### 17.1 First-time setup of the device with UNDOK

The first time you switch on an UNDOK-enabled product from Hama, or when you have set it to the factory settings, it creates a micro access point – a separate Wi-Fi network that you can connect to with your tablet or smartphone.

#### 17.1.1 Procedure for iOS users

- Open the UNDOK app on your iPhone or iPad
- Tap the **Set up audio system** menu item
- Make sure that the radio or speaker is in SETUP mode. Set the product to the factory settings, if necessary. Confirm the query with **Next**
- The UNDOK app now prompts you to connect to the product's Wi-Fi network using the iPhone/iPad settings – to do so, switch to the system settings on your iPhone and select the Wi-Fi network (for example, Setup Hama DIR3120LED). Then return to UNDOK and tap **Next**
- Now choose a name for the radio (for example, Office DIR3120) and confirm your entry with **Next**
- This takes you to the date and time settings – here you set the time format, time source and time zone.
- The various network configuration options are then offered to you (where applicable, Wi-Fi, WPS and Ethernet). Tap the desired method; UNDOK switches to the next window



- 
- Depending on the selected method, you can now select and configure the desired WiFi network, or set up a WPS connection.
  - Finally, the radio connects to the network; by tapping **Start using my audio system**, you will be able to use the device in UNDOK

### 17.1.2 Procedure for Android users

- Open the UNDOK app on your tablet or smartphone
- Tap the **Set up audio system** menu item
- Make sure that the radio or speaker is in SETUP mode. Set the product to the factory settings, if necessary. Confirm the query with **Next**
- On the following page, you will find a list of all available Wi-Fi networks as well as the suggested audio systems; the Hama product (for example, Setup Hama DIR3120LED) should be listed here. Tap the corresponding Wi-Fi network.
- Now choose a name for the radio (for example, Office DIR3120) and confirm your entry with **Next**
- This takes you to the date and time settings – here you set the time format, time source and time zone.
- The various network configuration options are then offered to you (where applicable, Wi-Fi, WPS and Ethernet). Tap the desired method; UNDOK switches to the next window
- Depending on the selected method, you can now select and configure the desired WiFi network, or set up a WPS connection.
- Finally, the radio connects to the network; by tapping "Start using my audio system", you will be able to use the device in UNDOK.

## 18. Care and Maintenance

- Only clean this product with a slightly damp, lint-free cloth and do not use aggressive cleaning agents.
- If you do not plan to use the product for a prolonged period, turn off the device and disconnect it from the power supply. Store it in a clean, dry place away from direct sunlight.

## 19. Warranty Disclaimer

Hama GmbH & Co KG assumes no liability and provides no warranty for damage resulting from improper installation/ mounting, improper use of the product or from failure to observe the operating instructions and/or safety notes.

## 20. Recycling Information

### Note on environmental protection:



After the implementation of the European Directives 2012/19/EU and 2006/66/EU in the national legal system, the following applies:

■ electrical and electronic devices as well as batteries must not be disposed of with household waste. Consumers are obliged by law to return electrical and electronic devices as well as batteries to the designated public collection points or to the point of sale at the end of their service lives. Detailed information on this topic is defined in the national laws of the respective country. This symbol on the product, the operating instructions or the package indicates that a product is subject to these regulations. By recycling, reusing the materials or other forms of utilising old devices/batteries, you are making an important contribution to protecting our environment.





## 21. Declaration of Conformity

**CE** Hama GmbH & Co KG hereby declares that the radio equipment type [00054227, 00054228, 00054229, 00054230] is in compliance with Directive 2014/53/EU. The full text of the EU declaration of conformity is available at the following internet address:  
www.hama.com -> 00054227 -> Downloads  
www.hama.com -> 00054228 -> Downloads  
www.hama.com -> 00054229 -> Downloads  
www.hama.com -> 00054230 -> Downloads

Frequency band(s)	Maximum radio-frequency power transmitted
Bluetooth: 2,400 – 2,480 GHz	6.5 dBm (EIRP)
WiFi: 2,400 – 2,4835 GHz	15.5 dBm (EIRP)
WiFi: 5,150 – 5,350 GHz	16.5 dBm (EIRP)
WiFi: 5,470 – 5,725 GHz	16.5 dBm (EIRP)
WiFi: 5,725 – 5,850 GHz	11.5 dBm (EIRP)

### Restrictions or Requirements in

Belgium, Bulgaria, Czech Republic, Denmark, Germany, Estonia, Ireland, Greece, Spain, France, Croatia, Italy, Cyprus, Latvia, Lithuania, Luxembourg, Hungary, Malta, the Netherlands, Austria, Poland, Portugal, Romania, Slovenia, Slovakia, Finland, Sweden, United Kingdom

#### Note



If channels 36-64 (channels of frequency 5150 MHz – 5350 MHz) are used, the device may only be used in closed rooms.




# ***hama***®

**Hama GmbH & Co KG**  
86652 Monheim / Germany

## **Service & Support**

 [www.hama.com](http://www.hama.com)

 +49 9091 502-115

**D**

**GB**

**The Spotify software is subject to third party licenses found here:  
[www.spotify.com/connect/third-party-licenses](http://www.spotify.com/connect/third-party-licenses)**

The Bluetooth® word mark and logos are registered trademarks owned by Bluetooth SIG, Inc. and any use of such marks by Hama GmbH & Co KG is under license. Other trademarks and trade names are those of their respective owners.

All listed brands are trademarks of the corresponding companies. Errors and omissions excepted, and subject to technical changes. Our general terms of delivery and payment are applied.